

**ADVISING UNVEILED:**

# **Pioneer Success Coach Approach to Student Success**

---

Back to the Bay 2024

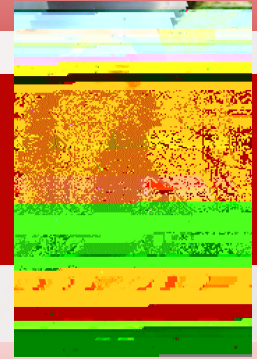
Pioneer Success Coaches assist students by providing advising services that address complex situations, as well as partnering with academic advisors and other campus units to best achieve student success and personal development. Coaches continuously assess and modify their approach to satisfy the ever-changing needs of students and facilitate academic empowerment.

Academic Alert or at-risk  
Bay Advisor Cases  
Progress Reports  
Disqualification

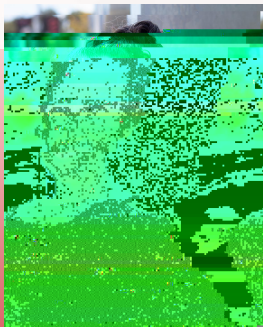




Audrey Larson, College of Science  
audrey.larson@csueastbay.edu

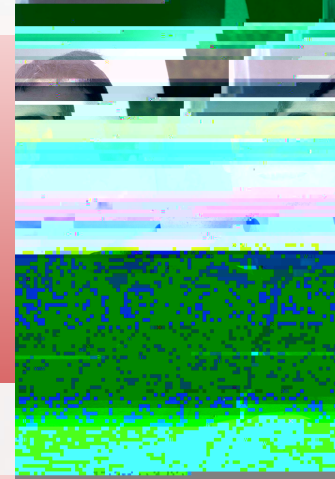


Cindy Salinas  
Freshman Pioneer Success Coach  
cindy.salinas@csueastbay.edu

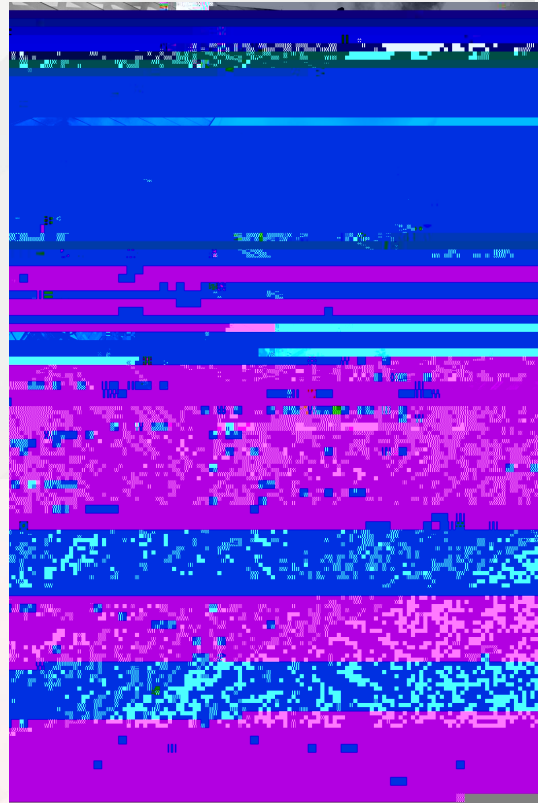


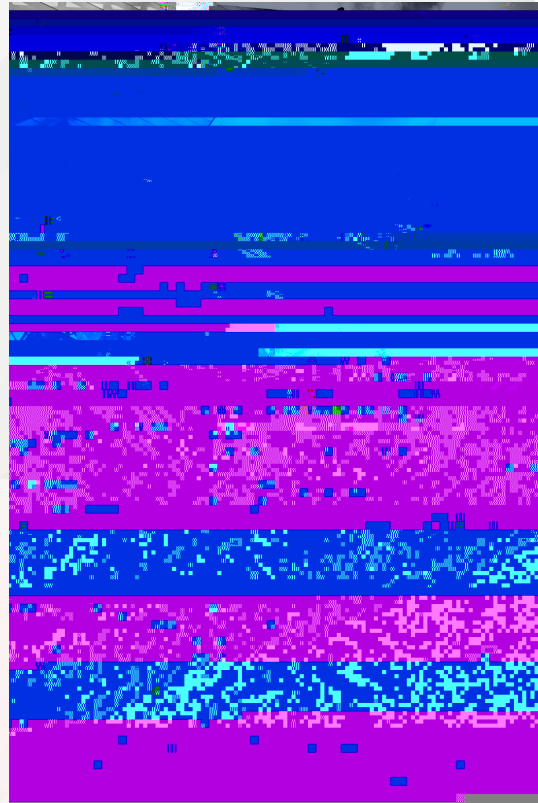
Lara Dungan, College of Letters,  
Arts and Social Sciences  
lara.dungan@csueastbay.edu

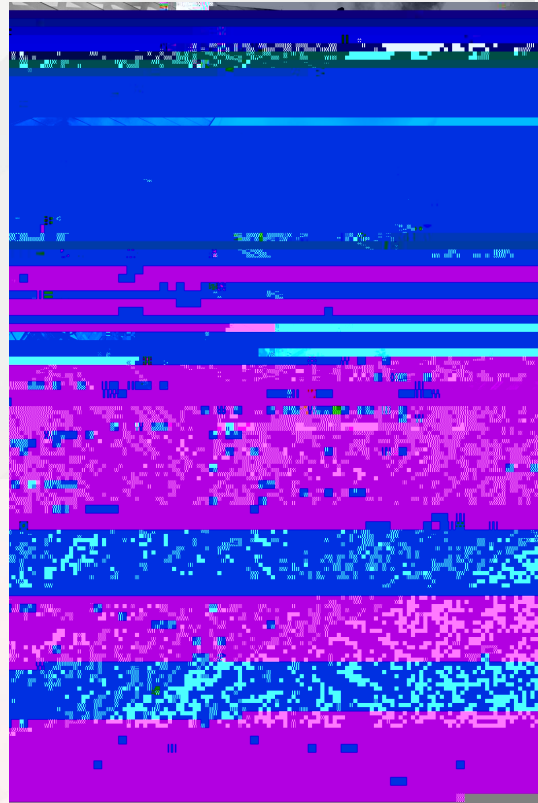
Ali Karayel, College of Business and Economics  
ali.karayel@csueastbay.edu



Angela Byrns, College of Education and Allied Studies  
angela.byrns@csueastbay.edu





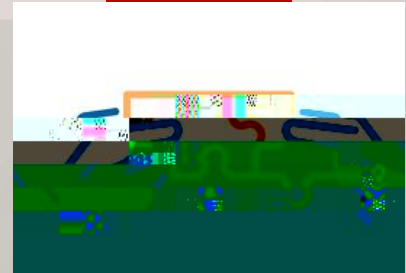






Each Pioneer Success Coach pulls a list from BayAdvisor of students that meet their unique criteria (for example, 1.99 CSUEB GPA or below)

Referrals come from you (faculty) or other advisors on campus, NOT from students



---

Progress report campaign is sent to faculty for all students who we are assigned to (our caseload)

Cases can be submitted by faculty for any student of concern



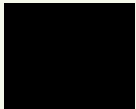
---

## Different Levels

1, 2, 3 - Goes to MAIN Advisor

Email automatically sent

4 - Goes to Pioneer Success Coach or Signature  
Program Advisor





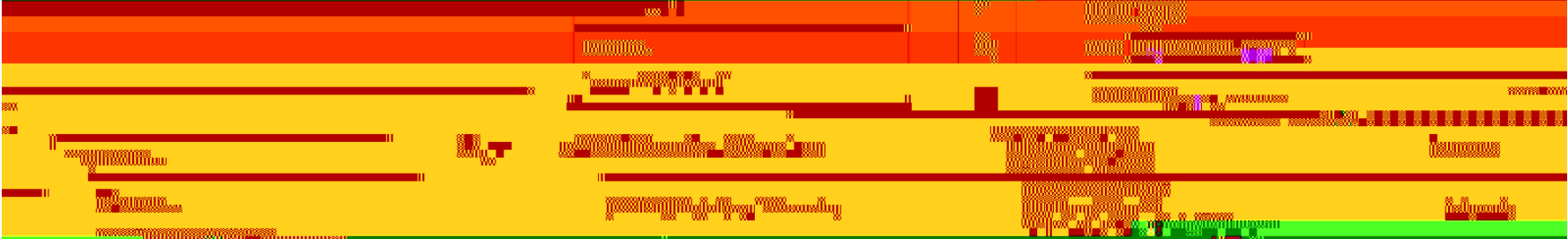
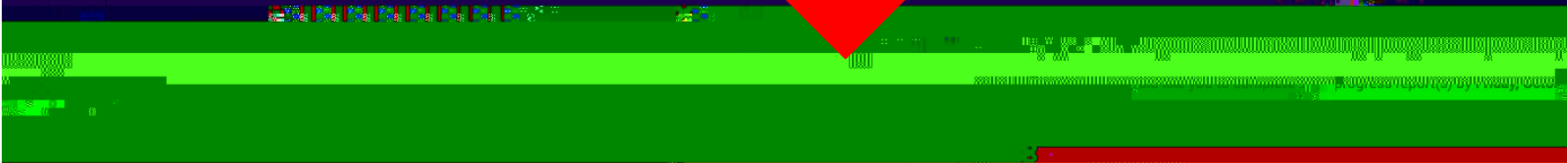
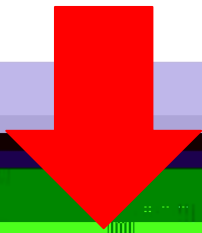
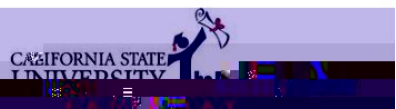
---

---



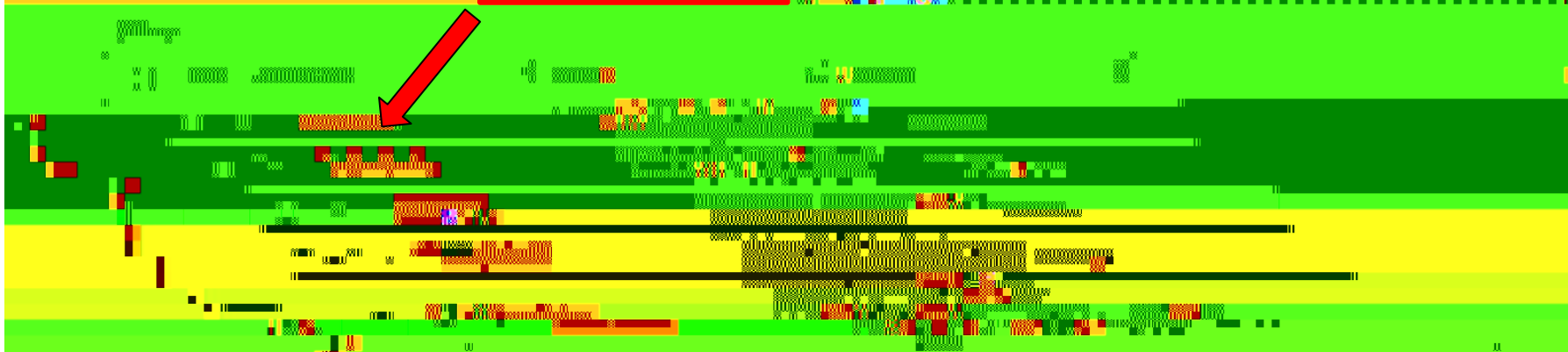
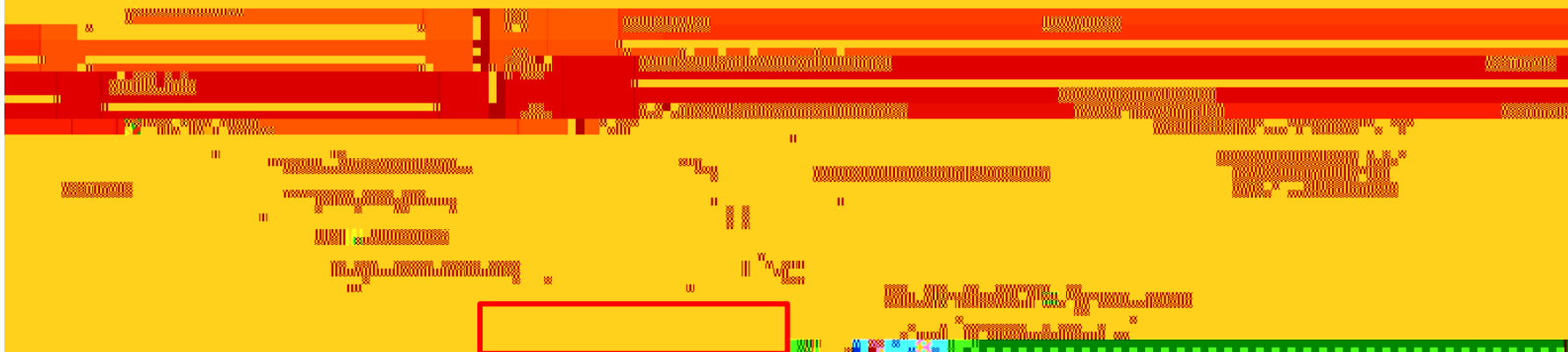


Professor Home

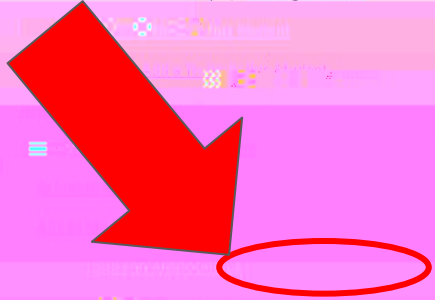


# Student Feedback

The image shows a screenshot of a student feedback survey page. The top header is blue with the text "Student Feedback" in white. Below the header, there is a navigation bar with a search icon and a "Log out" button. The main content area is white and contains a survey question: "Please indicate your course(s). Please only mark the course(s) that you are currently enrolled in." Below the question, there is a list of course numbers with checkboxes next to them. The course numbers are: 101, 102, 103, 104, 105, 106, 107, 108, 109, 110, 111, 112, 113, 114, 115, 116, 117, 118, 119, 120, 121, 122, 123, 124, 125, 126, 127, 128, 129, 130, 131, 132, 133, 134, 135, 136, 137, 138, 139, 140, 141, 142, 143, 144, 145, 146, 147, 148, 149, 150, 151, 152, 153, 154, 155, 156, 157, 158, 159, 160, 161, 162, 163, 164, 165, 166, 167, 168, 169, 170, 171, 172, 173, 174, 175, 176, 177, 178, 179, 180, 181, 182, 183, 184, 185, 186, 187, 188, 189, 190, 191, 192, 193, 194, 195, 196, 197, 198, 199, 200. The checkboxes are currently unchecked. The page is partially obscured by a blue overlay at the bottom.







201703546

Class

Profile Picture

Image



Student

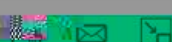


UNIVERSITY OF CALIFORNIA  
EAST BAY

Plan







Options

I was not...

Course Grade  
D/F

Repeated Courses

Student

Please select a reason

Alert M 3: Missing Assignments Can NOT Be Made Up Case

Add a Note on this Student

Add a To-Do on this Student

Total Credits Earned

92.00

Is this associated with a specific class? ... MGMT-370-01-LFC,Business of & Society...

Report on Appointment

Schedule an Appointment

Add to Student List

Additional Comments

Overview

Additional Comments

Additional Comments

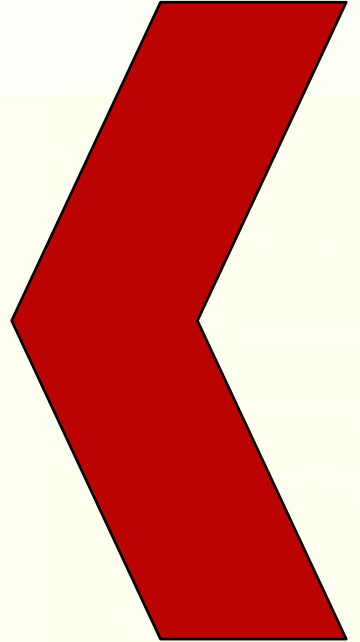
Additional Comments

Additional Comments





Directly Going to PSC (Level 4)



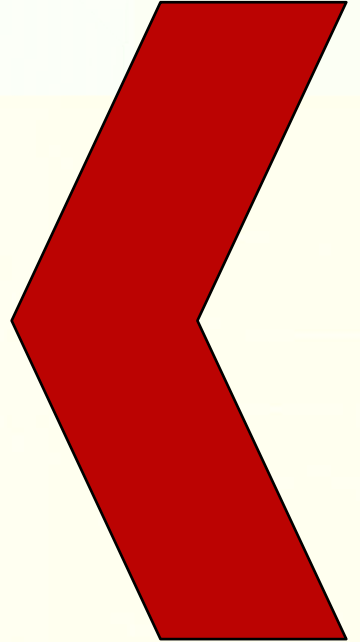


Withdrawal deadline already passed...

Student experienced recent death in family that is making them feel unsure about school, not submitting assignments oo

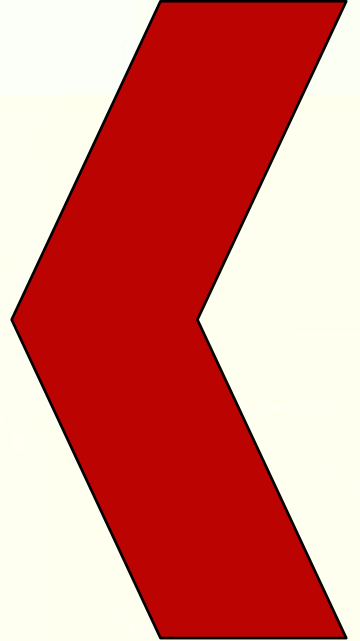
emC e

Student did not submit first paper (10% of final grade) and midterm paper (25% of final grade). They can be made up for half-credit. Also missed four in-class discussions (can also be made up for half-credit). Sent email and offered to go over strategies.





Student hasn't logged into Canvas in over a month and currently has 2% in course, sent multiple emails asking them to meet and go over a plan together, no response so far



The progress report campaign has started and you notice that a couple of the students who are struggling in your class are not listed on the progress report campaign? How can you send an 'alert' for students who are not part of the progress report campaign?

